



Gulf Harbour Marina

Wednesday Twilight Series 2021 - 22

The Organising Authority is the Gulf Harbour Yacht Club Inc,
1299 Laurie Southwick Pde., Gulf Harbour

W:ghyc.co.nz

COVID-19 NOTICE

All boats must comply with Covid-19 requirements issued by NZ Government COVID-19, Public Health Authorities and YachtingNZ Guidelines. Covid-19 "Notice to Competitors and Race Management volunteers" will be posted on the GHYC website

Notice of Race and Sailing Instructions

1.0 Rules

- 1.1 The series will be governed by the 'rules' as defined in *The Racing Rules of Sailing*.
- 1.2 For Keel Yachts the YNZ Safety Regulations Part II, Category 5 shall apply.
- 1.3 For Trailer Yachts the YNZ Safety Regulations Part V, Category B shall apply.
- 1.4 For Sports Boats the YNZ Safety Regulations Part VI Category B shall apply.
- 1.5 For Unballasted Centreboard yachts (including multihulls) and Ballasted Open Yachts not complying with Part II-IV of the YNZ Safety Regulations, Part I shall apply.
- 1.6 All yachts must be equipped with a VHF radio capable of transmitting and receiving on all channels.
A listening watch must be maintained in the Cockpit on VHF Ch77 while underway either with a Handheld or Cockpit fitted VHF Radio.
Also, Sports Boats, Unballasted Centreboard yachts (including multihulls) and Ballasted Open Yachts shall carry their VHF in a waterproof bag and be carried on one crew member.
- 1.7 Boats may fly extras (Extras are defined as sails not usually used to advantage to windward).
- 1.8 RRS 52 will be changed as follows: Autohelms, electric winches are allowed.
- 1.9 *RRS Appendix T* will apply (Arbitration)

2.0 Eligibility & Entry

- 2.1 Entries will be accepted from Keel Yachts, Trailer Yachts, Sports Boats and Multihulls, registered with YNZ and whose owners/skippers are financial members of a yacht club affiliated to YNZ.
- 2.2 GHYC reserve the right to accept or refuse any entry.
- 2.3 Entries are to be made on the Gulf Harbour Yacht Club website using the online entry form, with payment of the designated entry fee. **Entrants must provide a mobile phone number that they can be contacted on while racing.**
- 2.4 Only series entrants will be eligible for series points. Entries for individual races to be received by 1600 hrs on the Monday preceding a scheduled race day
Entry Fees: **\$90** for series or **\$15** per race
- 2.5 **Series entries to be received by 1600 hours on Monday 18 Oct (minimum 4 series entries required to run the series)**
- 2.6 Payment of entry fees by electronic payment to GHYC Bank Acct **12 3084 0101733 00**
 - Details to be loaded with payment
Particulars = **Boat Name** Code = **Series Name** Reference = **Series or Race #**

3.0 Notices to Competitors

- 3.1 Notices will be posted on one or more of the following:
 - 3.1.1 The Gulf Harbour Yacht Club website www.ghyc.co.nz
 - 3.1.2 Advised by Txt to the mobile number given in 2.3 above.
 - 3.1.3 Advised by email to the email address loaded with the online entry form
 - 3.1.4 On the official notice board(s) located at the GHYC clubrooms

4.0 Changes to Sailing Instructions

- 4.1 Any change to the Sailing Instructions will be posted at least 2 hours before the scheduled warning signal of the day's racing, on the day it will take effect.
- 4.2 Notices of cancellation will endeavour to be made by email and /or TXT to the email address /mobile number (refer 3.0 above), at least 1 hour before the scheduled warning signal of the day's racing.

5.0 Schedule of Races

- 5.1 The warning signal for each race is 1825 hours

- 5.2
 - Race 1 Wednesday 20 Oct 2021
 - Race 2 Wednesday 03 Nov 2021
 - Race 3 Wednesday 17 Nov 2021
 - Race 4 Wednesday 01 Dec 2021
 - Race 5 Wednesday 15 Dec 2021
 - Race 6 Wednesday 09 Feb 2022
 - Race 7 Wednesday 23 Feb 2022
 - Race 8 Wednesday 09 Mar 2022
 - Race 9 Wednesday 23 Mar 2022

- 5.3 To alert boats that a race will begin soon, the orange starting line flag will be displayed with one sound at least five minutes before a warning signal is made.

6.0 Class Flag

- 6.1 The class flag will be White

7.0 Racing Area

- 7.1 The races will be held on the waters south of the Whangaparaoa peninsula

8.0 Course to be sailed

- 8.1 The courses are detailed in Addendum A
- 8.2 No later than the warning signal the Race Start Vessel will display the course number on a board with a black digit on a white background.

9.0 Marks

- 9.1 The marks are detailed in Addendum A

10.0 The Start

- 10.1 The start for all courses will be approximately 0.7nm Southeast of the marina entrance
- 10.2 The starting line will be between a Staff displaying an Orange flag on the Race Committee Vessel and the course side of an orange conical buoy at the other end.
- 10.3 A boat that does not start within 10 minutes after her starting signal will be scored DNS without a hearing. This changes *RRS A4 and A5*. *Note: Boats that do not come to the start line will be scored as DNC.*
- 10.4 In addition to the provisions of *RRS 29*, if any boat(s) is identified “on course side” at the starting signal, the race committee shall attempt to broadcast her sail number or name on VHF Radio Ch 77. This does not absolve competitors of their responsibility to respond to the flag signals of the Race Committee Vessel. Failure to make a broadcast or to time it accurately will not be grounds for redress. This changes *Rule 62.1 (a)*. (*Redress*)

11.0 The Finish

- 11.1 The Finishing line will be between a Staff displaying a blue flag on the Race Committee Vessel and the course side of an orange conical buoy at the other end.

12.0 Time limit

- 12.1 The time limit for the first boat to finish in is 2000 hrs.
- 12.2 Boats failing to finish within 45 minutes after the first boat of its fleet sails the course and finishes will be scored DNF (Did Not Finish) This changes *RRS 35, A4 and A5*.

13.0 Protests and requests for redress

- 13.1 For protests where only a rule of part 2 (When Boats Meet) is alleged to have been broken, an arbitration hearing will be offered before any hearing.
- 13.2 A protest shall be lodged in the appropriate format (Forms available from the Club House or GHYC Website) within the protest time limit and delivered to a member of the Race Committee.
- 13.3 The time limit for lodging a protest is 75 minutes after the last boat has finished.

14.0 Handicapping

- 14.1 Handicapping will be in accordance with the GHYC Handicapping system.

15.0 Scoring

- 15.1 One (1) race is required to be completed to constitute a series.
- 15.2 (a) When fewer than 6 races have been completed a boat’s series scores will be the total of her race scores
(b) When 6 - 7 races have been completed a boat’s series score will be the total of her race scores excluding her worst score
(c) When 8 - 9 races have been completed a boat’s series score will be the total of her race scores excluding her 2 worst scores
- 15.3 *RRS Appendix A5.3* will apply

16.0 Safety Regulations

- 16.1 A boat that retires from a race shall notify the Race Committee either via VHF Ch.77, Phone, Txt (acknowledgment is required) or in person, as soon as practicable after they have retired. They shall also inform other competitors on VHF Radio Ch 77**
- 16.2 All entrants are required to register with the committee boat via VHF Radio Ch 77, before the warning signal advising the boat name and the number of people on board.
- 16.3 Boats may be inspected for compliance with the safety regulations at the discretion of the race committee
- 16.4 Skippers are required to maintain a written list on board of all crew for the day (including the skipper), their next-of-kin or contact person, and a contact phone number.** All crew must be made aware of the location of this list before departing their marina/mooring.
- 16.5 The Organising Authority **recommends that ALL competitors wear a Personal Floatation Device (Lifejacket)** that meet New Zealand Standard 5823:2005 (inflatable type 401 150N) with a crotch strap while underway
- 16.6 For any yachts sailing **Single Handed** the following additional safety regulations apply:
- 16.6.1 Skippers must wear an approved lifejacket whilst racing.
 - 16.6.2 Skippers must carry on their person a means of communication to self-initiate a means of rescue in the event that they fall overboard.

17.0 Radio Communications

- 17.1 All radio communication will be on **VHF Radio Ch.77**
- 17.2 Failure to receive a radio message from the Race Committee will not be grounds for redress. This changes *RRS 62.1(a)*
- 17.3 The call sign for the Race Committee Vessel is **"Gulf Harbour Race Control "**

18.0 Prizes

- 18.1 Day prizes may be awarded at the Gulf Harbour Yacht Club as soon as practicable after each race.
- 18.2 Series prizes may be awarded during the GHYC Summer prize Giving
- 18.3 The number of prizes awarded may be dependent on the number of boats participating
- | | |
|--------------|---|
| 1 – 3 boats | 1 st prize |
| 4 – 6 boats | 1 st and 2 nd prize |
| 7 plus boats | 1 st , 2 nd , and 3 rd prize |

19.0 Insurance

- 19.1 Each participating boat shall be insured with valid Third-Party insurance – liability insurance with a minimum cover of \$5M per incident or equivalent

20.0 Disclaimer of Liability

- 20.1 Competitors participate in this series entirely at their own risk. See *RRS rule 4, Decision to Race*. The responsibility for a boat's decision to participate in a race or to continue racing is hers alone.
- 20.2 The Organising Authority and/or any sponsor associated with this series shall not be responsible for the seaworthiness of a boat whose entry is accepted and/or the sufficiency and/or adequacy of its equipment or the competence of its skipper and crew.
- 20.3 The Organising Authority will not accept any liability for material damage or personal injury, or death sustained in conjunction with, before, during, or after this series

Further details contact the administrative office at:
GHYC. Ph 09 424 2118 admin@ghyc.co.nz

Addendum A - Twilight Series Courses

Marks:

Mark A will be an orange conical buoy in position 36 38.170S 174 47.670E

Mark B will be an orange conical buoy in position 36 38.880S 174 46.820E

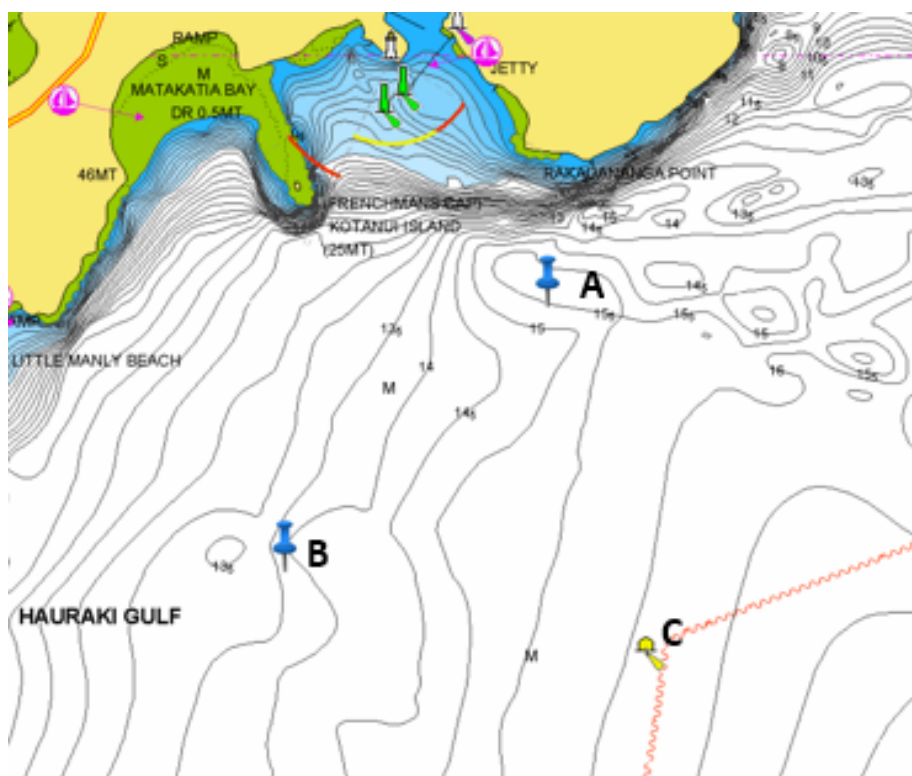
Mark C will be the Yellow Gulf Harbour Sailing Buoy in position
36 39.130S 174 48.030E

Courses:

Course Numbers 1, 3, 5 ROUNDING MARKS TO STARBOARD

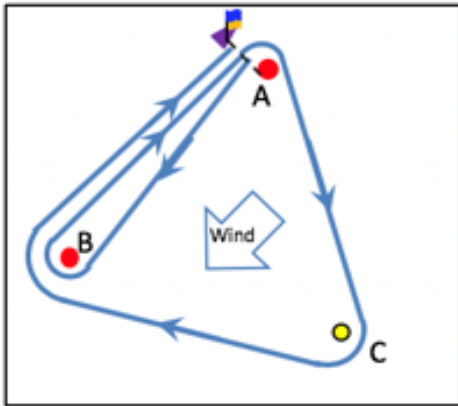
Course Numbers 2, 4, 6 ROUNDING MARKS TO PORT

Course #	Mark rounding order	Marks to be taken to:	Approx. Wind Direction
1	Start (at A) – B – A – C – B – Finish (at A)	Starboard	North East
2	Start (at A) – B – A – B – C – Finish (at A)	Port	South West
3	Start (at A) – C – B – C – B – Finish (at A)	Starboard	Westerly
4	Start (at A) – B – C – B – C – Finish (at A)	Port	Easterly
5	Start (at A) – C – A – C – B – Finish (at A)	Starboard	Southerly
6	Start (at A) – C – A – B – C - Finish (at A)	Port	Northerly

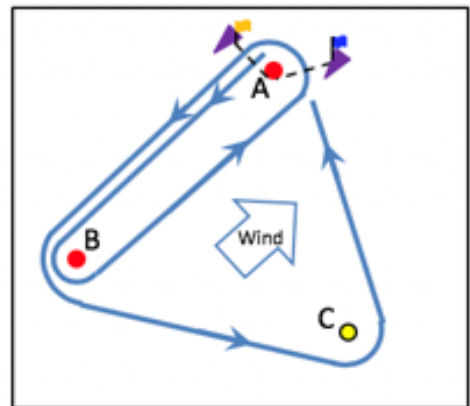


Addendum A – Twilight Series Course Diagrams

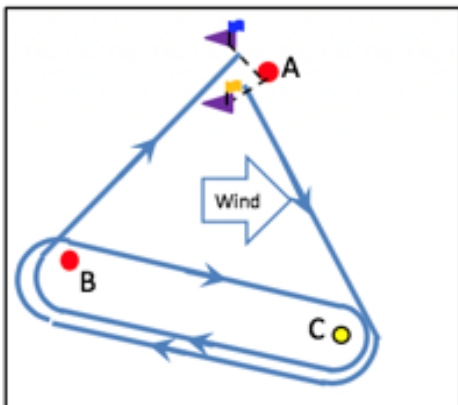
Course 1
 Starboard rounding (Northeast Wind)
 Start (at A) – B – A – C – B – Finish (at A)



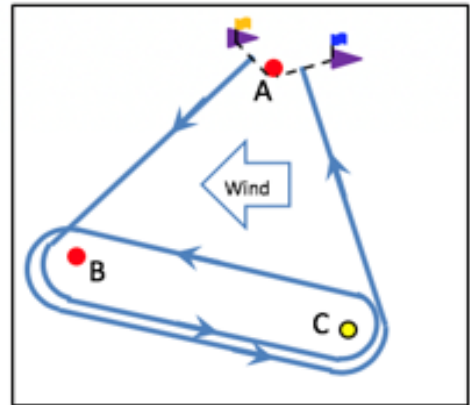
Course 2
 Port rounding (Southwest Wind)
 Start (at A) – B – A – B – C – Finish (at A)



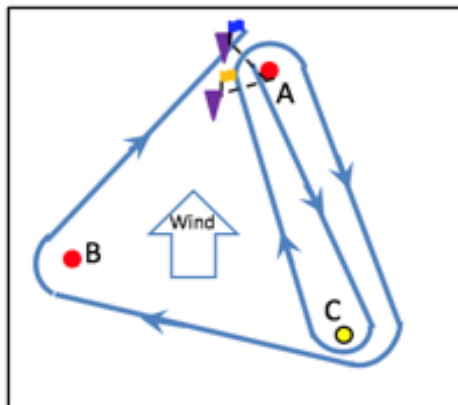
Course 3
 Starboard rounding (Westerly Wind)
 Start (at A) – C – B – C – B – Finish (at A)



Course 4
 Port rounding (Easterly Wind)
 Start (at A) – B – C – B – C – Finish (at A)



Course 5
 Starboard rounding (Southerly Wind)
 Start (at A) – C – A – C – B – Finish (at A)



Course 6
 Port rounding (Northerly Wind)
 Start (at A) – C – A – B – C – Finish (at A)

