



The Battle of the Hikers Organised by Rutland Sailing Club July 24th and 25th 2021

Edith Weston, Rutland, LE15 8HJ | 01780 720292 | www.rutlandsailingclub.co.uk

SAILING INSTRUCTIONS

The notation '[NP]' in a rule of the sailing instructions (SIs) means that a boat may not protest another boat for breaking that rule. This changes RRS 60.1(a). The notation (DP) in a rule in the Sailing Instructions means that the penalty for a breach of that rule may, at the discretion of the protest committee, be less than disqualification.

1 RULES

- 1.1 The event is governed by the rules as defined in *The Racing Rules of Sailing*.
- 1.2 Rule 40.1 shall apply at all times when on the water or the jetties.

2 CHANGES TO SAILING INSTRUCTIONS

- 2.1 Any change to the sailing instructions will be posted at least one hour before the scheduled time of the first race on the day it will take effect, except that any change to the schedule of races will be posted by 20.00hrs on the day before it will take effect.

3 COMMUNICATIONS WITH COMPETITORS

- 3.1 Notices to competitors will be posted on the official notice board located before the event on the RSC website and during the event in the wet bar in the clubhouse.
- 3.2 [DP] While racing except in an emergency, a boat shall not make voice or data transmissions and shall not receive voice or data communication that is not available to all boats.

4 CODE OF CONDUCT

- 4.1 [DP] Competitors and support persons shall comply with reasonable requests from race officials.

5 SIGNALS MADE ASHORE

- 5.1 Signals made ashore will be displayed from the flag posts at the west end of the clubhouse.
- 5.2 When flag AP is displayed ashore, '1 minute' is replaced with 'not less than 30 minutes' in Race Signals AP.

6 SCHEDULE OF RACES

- 6.1 Saturday July 24th First race warning signal at 12.25hrs, subsequent races back to back
- Sunday July 25th First race warning signal at 10.25hrs, subsequent races back to back.
- 6.2 The event will comprise six or more races and no more than four races will be sailed on any one day.
- 6.4 To alert boats that a race or sequence of races will begin soon, the orange starting line flag will be displayed with one sound at least five minutes before a warning signal is made.

7 CLASS FLAGS

- 7.1 The Class flag is Flag Q – Yellow

8 RACING AREA

The racing area will be described at the briefing and a notice posted each day on the official notice board.

9 COURSES

- 9.1 The diagram(s) appended show the course(s), the order in which marks are to be passed and the side on which each mark is to be left.
- 9.2 No later than the warning signal, the race committee signal vessel will display the course selected and may display the approximate compass bearing of the first leg.
- 9.3 Legs of the course will not be changed after the preparatory signal. This changes RRS 33.

10 MARKS

A description of the marks of the courses is given in the Appendix.

11 OBSTRUCTIONS

- 11.1 The following areas are designated as obstructions:
The nature reserves at the ends of the western and northern arms of Rutland Water; the cruiser mooring areas. The Rutland Belle has right of way and competitors should keep at least 40 metres clear of fishing boats.

12 THE START AND LAP RECORDING

- 12.1 Races will be started using RRS 26 with the warning signal made five minutes before the starting signal.
- 12.2 The starting line is between a staff displaying an orange flag on the signal vessel at the starboard end and the course side of the port-end starting mark displaying an orange flag.
- 12.3 A boat that does not start within four minutes after her starting signal will be scored Did Not Start without a hearing. This changes RRS A5.1 and A5.2.
- 12.4 After the start, a buoy displaying a blue flag will be laid to port of the starting race committee vessel, part way along the original start line. During the race, competitors shall sail upwind through a line defined by the starting race committee vessel and this blue flag buoy. Boat positions will be recorded on each lap.
Boats shall not sail downwind though this line during the race.

13 THE FINISH

- 13.1 The finishing line is between the race committee vessel displaying a blue flag at the starboard end and the buoy displaying the blue flag at the port end.
The position of the finishing line is shown in the course diagrams appended.
- 13.2 The races will be finished by hoisting Flag "S" from the race committee vessel. Once Flag S is hoisted ALL boats will be finished the next time they cross the finish line.

14 PENALTY SYSTEM

- 14.1 The Scoring Penalty, RRS 44.3, does not apply.

15 TIME LIMITS AND TARGET TIMES

- 15.1 The Mark 1 Time Limit, Race Time Limit (see RRS 35), and the Finishing Window are shown in the table below.

| Mark 1 Time Limit | Race Time Limit | Race target time | Finishing Window |
|-------------------|-----------------|--------------------|------------------|
| 30 mins | 75 mins | 45 mins for leader | 15 mins |

- 15.2 If no boat has passed the first mark within the Mark 1 Time Limit, the race will be abandoned.
- 15.3 The Finishing Window is the time for boats to finish after the first boat sails the course and finishes. After the first boat has completed the course and finished, other boats may be finished by a race

committee vessel displaying a "W" Flag. They will be given the number of laps and time they had completed the last time they crossed the finish/gate line. This changes RRS 28,35, A5, A4. Boats finished by W Flag should return to the starting area immediately.

15.4 Failure to meet the Target Time will not be grounds for redress. This changes RRS 62.1(a).

16 HEARING REQUESTS

16.1 The protest time limit is 60 minutes after the last boat finishes the last race of the day or the race committee signals no more racing today, whichever is later. The time will be posted on the official notice board.

16.2 Hearing request forms are available from the race office.

16.3 Notices will be posted no later than 30 minutes after the protest time limit to inform competitors of hearings in which they are parties or named as witnesses. Hearings will be held in the protest room, located in the clubhouse, beginning at the time posted.

16.4 A list of boats that have been penalized for breaking RRS 42 under Appendix P will be posted.

17 SCORING

17.1 The number of races to constitute a series and the number of races to count are described in the Notice of Race.

17.2 A boat's position in a race shall be determined by applying her PY number to her average lap time in that race.

18 SAFETY REGULATIONS

18.1 [DP] A boat that retires from a race shall notify the race committee at the first reasonable opportunity.

19 REPLACEMENT OF CREW OR EQUIPMENT

19.1 [DP] Substitution of competitors is not allowed without prior written approval of the race committee

20 TRASH DISPOSAL

20.1 Trash may be placed aboard official vessels.

21 BERTHING

21.1 [DP] Boats shall be kept in their assigned places while in the boat park.

22 PRIZES

Prizes will be awarded to the winner of the series and to the leading single handed boat and the leading double handed boat. Other prizes may be awarded at the discretion of the organisers.

23 RISK STATEMENT

23.1 RRS 3 states: 'The responsibility for a boat's decision to participate in a race or to continue to race is hers alone.' By participating in this event each competitor agrees and acknowledges that sailing is a potentially dangerous activity with inherent risks. These risks include strong winds and rough seas, sudden changes in weather, failure of equipment, boat handling errors, poor seamanship by other boats, loss of balance on an unstable platform and fatigue resulting in increased risk of injury. **Inherent in the sport of sailing is the risk of permanent, catastrophic injury or death by drowning, trauma, hypothermia or other causes.**

24 INSURANCE

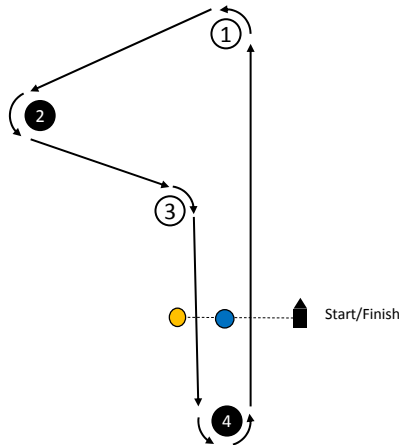
24.1 Each participating boat shall be insured with valid third-party liability insurance with a minimum cover of £3 million per incident or the equivalent.

Appendix of Course Diagrams

Course P

Start
Marks 1 and 2 to port,
Mark 3 to Starboard,
Mark 4 to port,
Through Finish gate –
CB to Blue
Repeat until S Flag
displayed

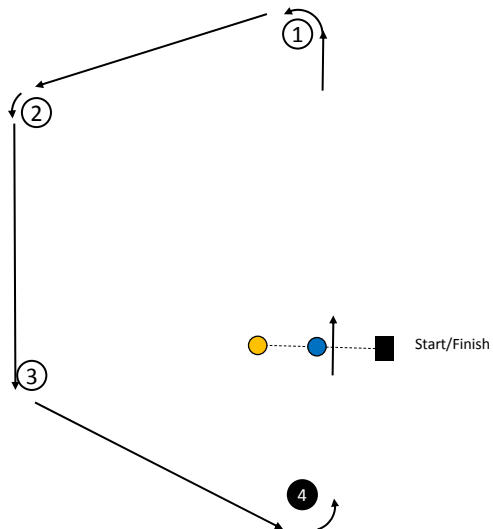
Marks 1, 2, 3 and 4 are
black spheres

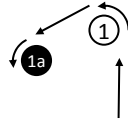


Course T Trapezoid

Start
Marks 1.2.3.4 to port.
Through Finish gate –
CB to Blue
Repeat until S Flag
displayed

Marks 1, 2, 3 and 4
are black spheres





**Windward/Leeward
Course WL**

Start,
 Marks 1 and 1a to port,
 Mark 2 to port,
 Through Finish gate – CB to Blue
 Repeat until S Flag displayed

The marks 1, 1a and 2 are black spheres

