



7. RACING AREA

7.1 In addition to the areas described in the Combined clubs 2021 sailing instructions, the race committee may use any marks bounded to the south by the Wallet Spitway buoy and as far East as a line through Wallet 3 and Wallet 6.

8. COURSES

8.1 The course to be sailed will be either.

Round the Cans (RTC), from a course card, or Windward/Leeward as shown in Addendum A of this Appendix.

The course will be broadcast by the Committee Boat on VHF Channel 77. prior to the warning signal for the start of each race.

9. MARKS

Marks are as per the 2021 Sailing instructions or inflatable laid marks as described by the committee vessel.

15. TIME LIMITS

There will be no time limits for any of these races. This changes RRS35.

17. SCORING

17.1 Two races are required to be completed to constitute a series.

17.2 When fewer than three races have been completed a boats series score will be the total of her race scores.

17.3 When four or more races have been completed a boats score will be the total of her race scores excluding her worst score.

18. PRIZES

7.1 The Centenary Cup will be awarded to the overall winner of the LOCAL HANDICAP Class.

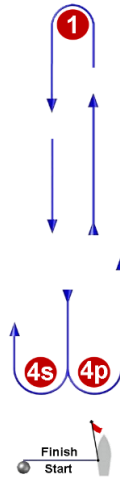
7.2 The Coronation Challenge Cup will be awarded to the overall winner of the White Sail Class.

7.3 Prizes will be awarded to the boat where four crew have the lowest combined average age over 18.



Addendum A

L



Course: Windward/Leeward

Signal	Marking Rounding Order
L2	Start - 1 - 4s/4p - 1 - Finish
L3	Start - 1 - 4s/4p - 1 - 4s/4p - 1 - Finish
L4	Start - 1 - 4s/4p - 1 - 4s/4p - 1 - 4s/4p - 1 - Finish