



Clontarf Yacht & Boat Club

“Belvedere” Clontarf Rd., Dublin 3. Tel: 01 833 2691

“At Home” 2018 - Sailing Instructions

Sat. 14th July HW: 13.32hrs

Sun. 15th July HW: 14.23hrs

1. RULES

Racing will be governed by the RRS, the relevant class rules, the notice of race, these sailing instructions and any changes to them.

2. ELIGIBILITY

A boat may be entered by a member of a club or other organisation affiliated to a national authority. Competitors are welcome as temporary Members of CY&BC for the duration of the event.

3. SAFETY

Effective personal flotation devices shall be worn while afloat by all competitors. There shall be no racing in the shipping channel, except for ‘passage’ boats. Shipping has right of way. A boat shall not cross the half-tide part of the North Bull wall at any time.

4. NOTICES TO COMPETITORS

Notices will be posted on the notice board in the CY&BC entrance hall.

5. CHANGES TO SAILING INSTRUCTIONS

Any change to the sailing instructions will be posted before 1000hrs on the day it will take effect, except that any change in the schedule of races will be posted by 2100hrs on the day before it will take effect. All changes will be posted on official notice board in the club hallway.

6. STARTING

Starting sequence will be as per RRS 26 except if there is a general recall that class will then start 5 minutes after the last scheduled start.

PASSAGE RACES TO CLONTARF

Competitors should cross the shipping channel at right angles only.

V1. STARTING AT DUN LAOGHAIRE

Fleet: Glen and Squib Classes

The time of the warning signal shall be advised to fleets by the Class Captains. Starting over a DBSC line, course to the Liffey channel will be designated by displaying the respective course letters in sequence.

V2. STARTING AT HOWTH

Fleet: Howth 17s

The time of the warning signal shall be advised to fleets by the Class Captains. The order of starts and course as far as the mouth of the Liffey will be advised by the class captain.

V3. COURSES FOR PASSAGE RACES

From the last course mark to the No. 7 navigation buoy (green, 0.5nm east of North Bull Light), to be left to Port, pass between North Bull and Poolbeg lighthouses leaving the shipping channel to port, to the finishing line.

V4. KEELBOATS FINISHING LINE – Races from DUN LAOGHAIRE, HOWTH AND CLONTARF

The finishing line shall be between a finishing mark boat displaying a blue and red quartered flag and the North Bank lighthouse, leaving the finishing mark boat to starboard.

VHF for Howth17's, Glens, Clontarf and Poolbeg cruiser classes is Channel 72

VHF for ferry services in Clontarf is Channel 37 (M1)

First warning signals: Saturday 1200hrs. Sunday 1300hrs.

C1. CLASSES & FLAGS and order of starts:

E-Boats (Flag E), Clontarf Cruisers /Poolbeg/Echo (Flag C).

C2. HANDICAP

A boat's time in a race will be adjusted by a handicap advised by her class captain.

CY&BC cruisers and Poolbeg classes will start together. CY&BC cruiser class prize will be awarded as per CY&BC handicap system. Poolbeg cruiser results will be awarded in accordance with Poolbeg handicap system.

C3. STARTING LINE

The starting line will be between the mainmast of a starting mark boat displaying a blue and red quartered flag and an outer mark. An inner limit buoy may be moored approximately on the starting line and, if so, no boat shall pass between the Inner limit buoy and the starting mark boat. A boat starting later than 5 minutes after her starting signal will be scored DID NOT START. This changes rule A4.1.

C4. COURSES & FINISH LINE – E-BOATS, CLONTARF AND POOLBEG CRUISERS

The course number will be displayed on the starting mark boat. For courses see Appendix 1.

DINGHY CLASSES (Ch. 73) - RACES AT CLONTARF - Note that all dinghy races will be held INSIDE the harbour area bounded by the Bull Wall and the River Liffey. Competitors are reminded that they must stay clear of the shipping channel at all times.

D1. DINGHY STARTS

Saturday: Two races back to back, warning signal first race:1200hrs.

Sunday: One race, warning signal: 1300hrs.

Note: Race 2 on Saturday will commence ASAP after completion of race 1 so please do not stray far from starting line after finishing Race 1.

D2. HANDICAP

The Laser Class (all rigs) will be scored according to Portsmouth Yardstick handicaps.

D3. DINGHY CLASS FLAGS AND ORDER OF STARTS:

IDRA 14: (Flag Q), Laser - All Rigs: (Flag R), 420 & Fireballs: (Flag A), Topper: (Flag T).

D4. DINGHY STARTING LINE

The starting line will be between the main mast of a starting mark boat displaying an orange flag and an outer mark. An inner limit buoy may be moored approximately on the starting line and, if so, no boat shall pass between the Inner limit buoy and the starting mark boat. All boats must cross the start/finish line on each round. A boat starting later than 4 minutes after her starting signal will be scored DID NOT START. This changes RRS A4.1.

D5. COURSE CHANGE

See Appendix 2. In the event of inclement weather dinghy courses maybe changed to a shore start. Should this happen, crews will be briefed on the new course details.

SATURDAY RACE 1 & 2

The courses will be as per Appendix 2

SUNDAY TROPHY RACE

The course will be as per Appendix 2

There will be no official briefing – any queries can be directed to the PRO ashore before racing or on the starting line.

7. TIME LIMITS

Boats starting from Dun Laoghaire and Howth shall be timed up to 1530hrs.

Clontarf/Poolbeg cruiser races will be timed for 3 hours after the start for each class.

The Dinghy time limit will be 1.5 hours except that boats failing to finish within 20 minutes after the first boat in its class sails the course and finishes will be scored "DNF". This changes RRS 35 and A4.1.

8. PROTESTS

A boat intending to protest shall, after finishing, clear of the finishing line, inform the race committee on the finishing mark boat of the sail number of the boat(s) protested and wait for an acknowledgement. This changes RRS 61.1.a. The S.I. SAFETY shall not be grounds for protest against another boat.

9. PROTEST TIME:

The time limit for protests and requests for redress is 60 minutes after the last boat finishes the last race of the day for that fleet. Protest forms shall be delivered to the race office in the clubhouse within the protest time limit. This changes RRS 61.3 & 62.2

10. PROTEST HEARINGS / REQUESTS TO RE-OPEN

A schedule of protest hearings will be posted 10 minutes after the time limit for protests. The listing of a boat on this schedule shall constitute informing her under RRS 61.1(b). Parties involved shall present themselves with their witnesses at the time and place indicated. This changes RRS 63.2.

A request to re-open a hearing shall be delivered no later than 15 minutes after the party was informed of the decision. This changes rule 66.

11. NUMBER OF BOATS REQUIRED

A minimum of 2 boats must be present in the starting area to constitute a race.

12. PRIZES

The "At Home" prizes will be sailed for on Saturday, and the perpetual trophies on Sunday.

13. DISCLAIMER OF LIABILITY

Competitors participate entirely at their own risk, see RRS 4, Decision to Race. The Club will not accept any liability for material damage, personal injury or death sustained in conjunction with, prior to, during or after racing.

14. INSURANCE

Each participating boat shall be insured with valid third party liability insurance, with a minimum cover of €3 million per event or the equivalent.

15. MARKS

Dinghy marks are orange or red inflatable buoys. Cruiser marks are black cylindrical buoys with white lettering.

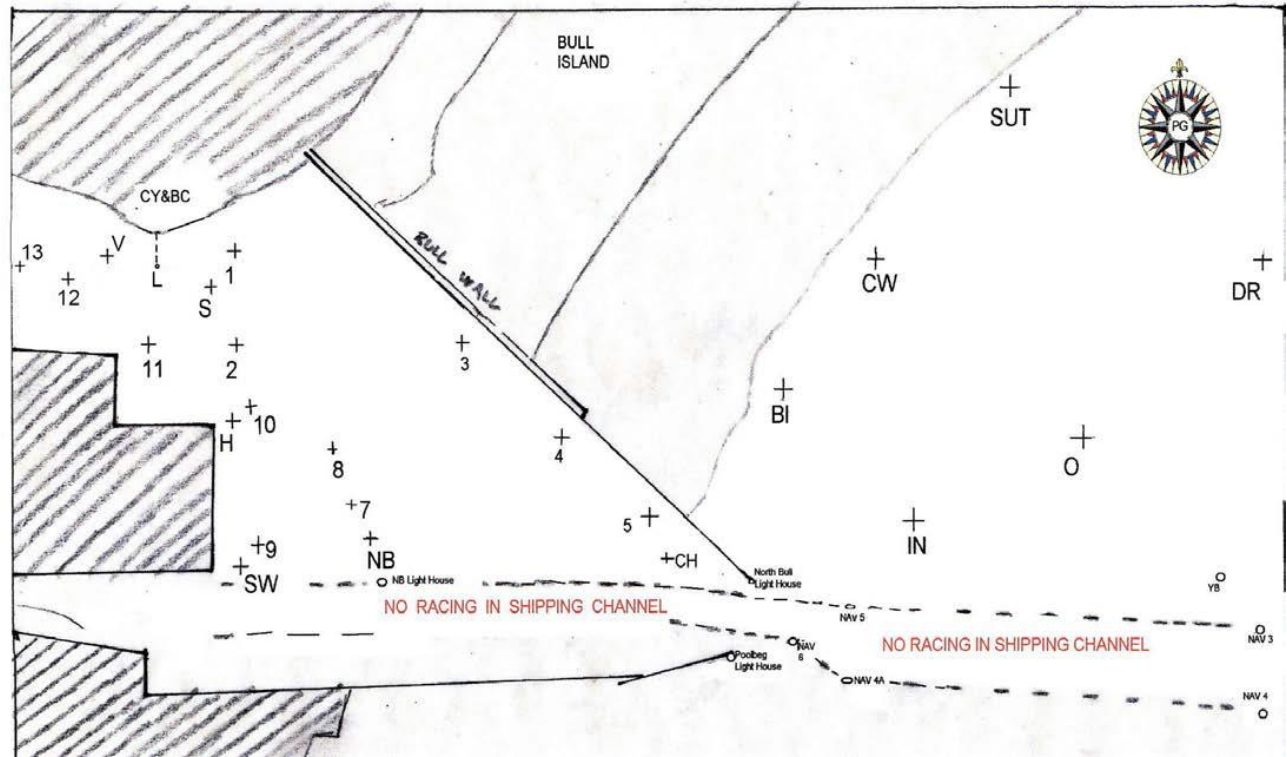
Appendix 1: Courses for Cruiser Classes

Course No.	Wind Direction	Course
1	W	Start – CH(s) – O(p) – DR(p) – BI(p) – IN(s) – CH(p) - Finish
2	SW	Start – SW(p) - CH(s) – O(p) – DR(p) – SUT(p) – BI(p) – IN(s) – CH(p) - Finish
3	NW	Start – H(s) - CH(s) - DR(p)– CW(p) – CH(p) - Finish
4	N	Start – H(s) - CH(s) - O(p)– SUT(p) – IN(s) – CH(p) - Finish
5	NE	Start – H(s) - CH(s) – IN(p) – BI(s) – IN(s) – CH(p) - Finish

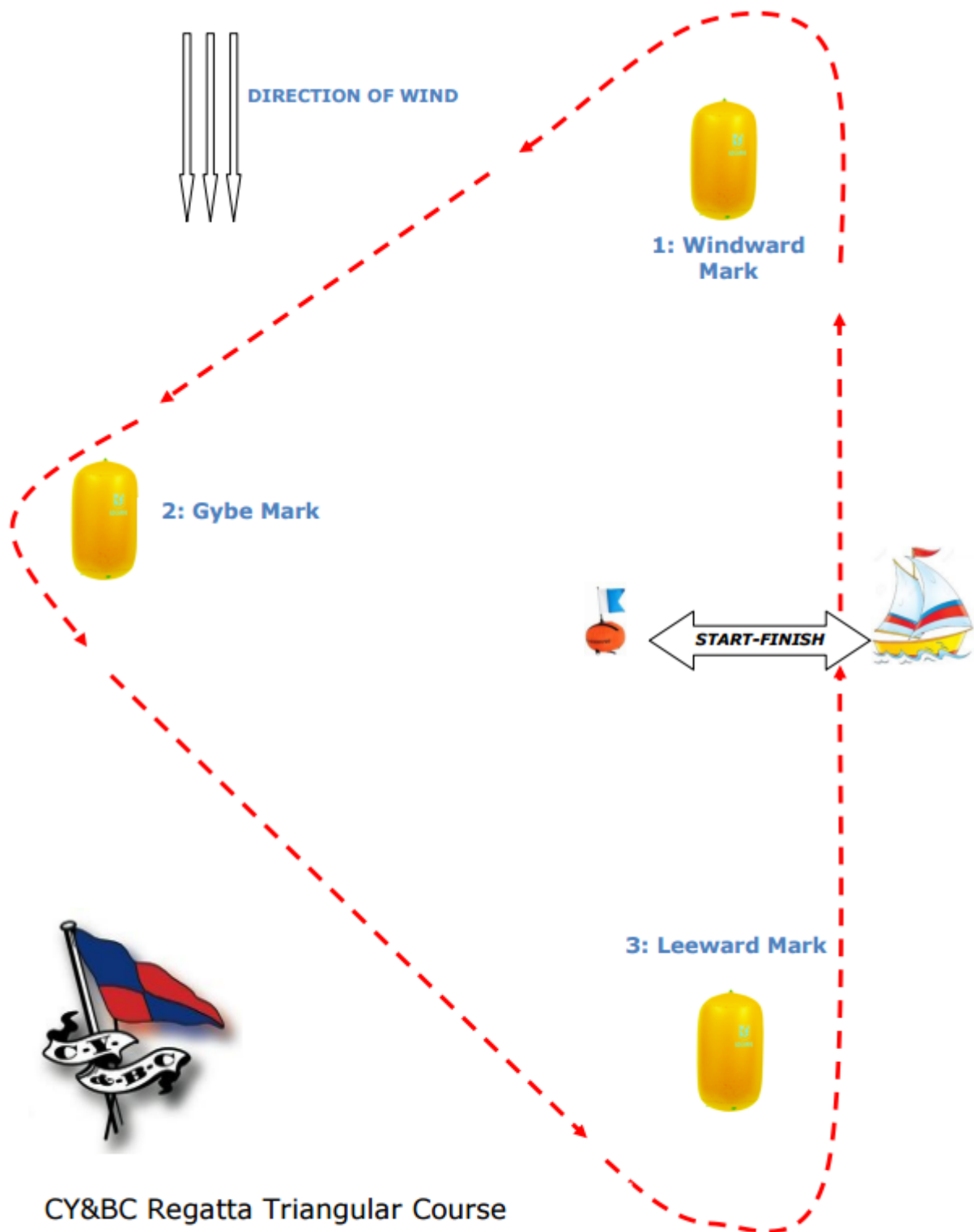
H = Hub. S=Spit. SW = South West. NB = North Bank. CH = Churn. BI = Bull Island. O = Outer. SUT = Sutton. DR = Drumleck. CW = Causeway. IN = InnerMark

Approx. positions for Dublin Bays Marks:

Inner	53°20.80N	006°08.2W	Bull Island	53°21.10N	006°08.8W
Causeway	53°21.50N	006°08.4W	Sutton	53°21.80N	006°07.8W
Outer	53°21.00N	006°07.5W	Drumleck	53°21.40N	006°07.0W



Appendix 2: Courses for Dinghy Classes



CY&BC Regatta Triangular Course

1. Marks to be rounded in the following order: 1-2-3-1-2-3-Finish
2. You **MUST** go through the start finish line on each lap.