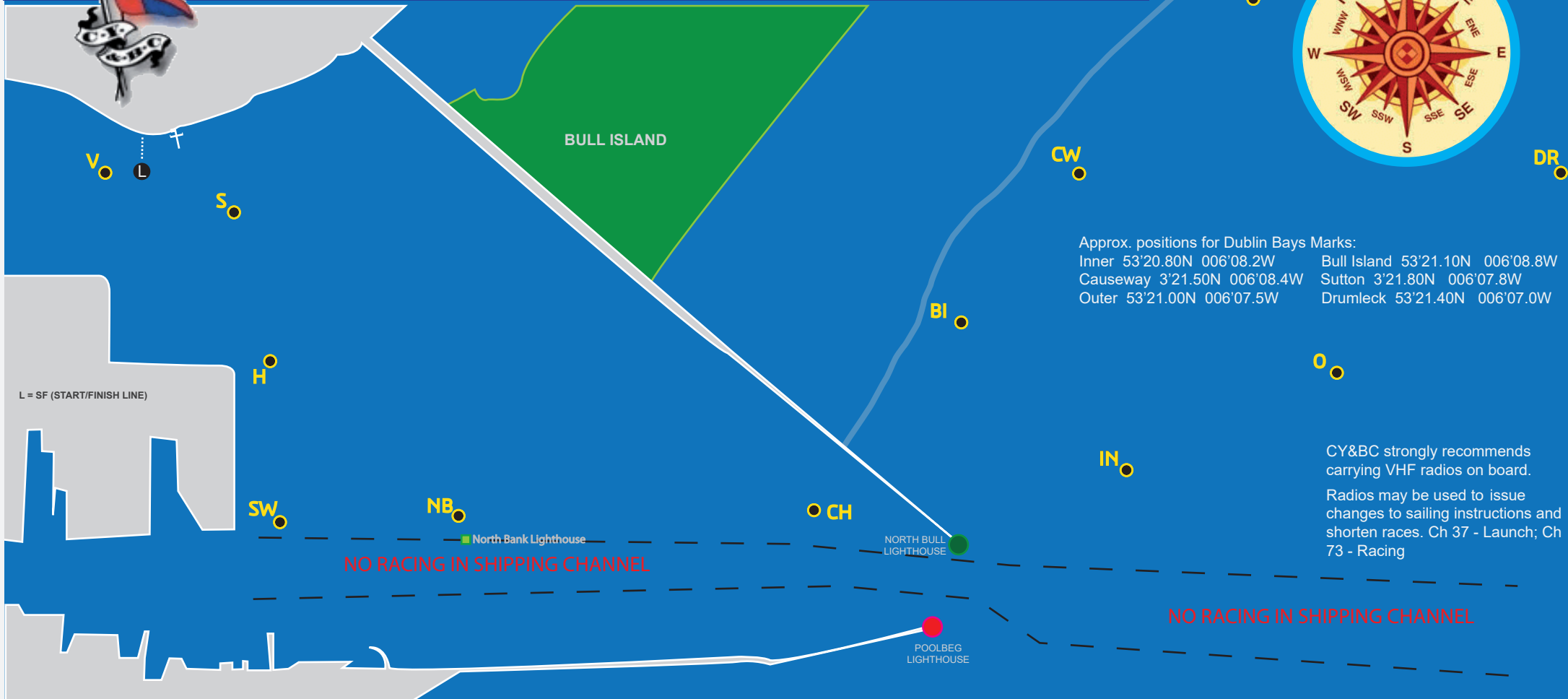


CY&BC CRUISER COURSE CARD 2017



Approx. positions for Dublin Bays Marks:

Inner 53°20.80N 006°08.2W	Bull Island 53°21.10N 006°08.8W
Causeway 3°21.50N 006°08.4W	Sutton 3°21.80N 006°07.8W
Outer 53°21.00N 006°07.5W	Drumleck 53°21.40N 006°07.0W

CY&BC strongly recommends carrying VHF radios on board. Radios may be used to issue changes to sailing instructions and shorten races. Ch 37 - Launch; Ch 73 - Racing

Wind Dir.	No	miles	Course
NW+W+SW.short	1	4	L-Vp-Hs-SWp-CHp-NBs-L
NW+W+SW. long	2	6	L-Vp-Hs-SWp-CHp-SWp-CHp-NBs-L
NE+E+SE. short	3	4	L-Ss-Hp-NBp-CHs-SWs-Hp-Vs-Line
NE+E+SE long	4	6	L-Ss-Hp-NBp-CHs-SWs-CHp-NBs-Vs-L
West short	5	5.5	L-Vp-NBp-CHs-BIs-INs-CHp-NBs-L
West long	6	7.5	L-Vp-NBp-CHs-DRp-Blp-CHp-NBs-L
South West short	7	6	L-Vp-NBp-CHs-INp-CWp-CHp-NBs-L
South West long	8	7.5	L-Vp-NBp-CHs-Op-SUTp-CHp-NBs-L
South short	9	6	L-NBp-CHs-CWs-INs-CHp-SWs-Hp-Vs-L
South long	10	7	L-NBp-CHs-CWs-INs-Blp-CHp-SWs-Hp-Vs-L
South East short	11	6	L-NBp-CHs-BIs-INs-CHp-SWs-Hp-Vs-L
South East long	12	7	L-NBp-CHs-CWs-Os-CHp-SWs-Hp-Vs-L

- B**=Bull Island
- CH**=Churn
- CW**=Causeway
- DR**=Drumleck
- H**=Hub
- IN**=InnerMark
- NB**=North Bank
- O**=Outer
- S**=Spit
- SUT**=Sutton
- SW**=SouthWest
- V**=Vernon

Wind Dir.	No	miles	Course
East short	13	6.5	L-NBp-CHs-BIs-Os-CHp-SWs-Hp-Vs-L
East long	14	7.5	L-NBp-CHs-BIs-DRs-CHp-SWs-Hp-Vs-L
North East short	15	6	L-NBp-CHs-CWs-CHp-SWs-Hp-Vs-L
North East long	16	7	L-NBp-CHs-SUTs-CHp-SWs-Hp-Vs-L
North short	17	5.5	L-Vp-NBp-CHs-BIs-INs-CHp-NBs-L
North long	18	7	L-Vp-NBp-CHs-BIs-INp-CWp-Blp-CHp-NBs-L
North West short	19	5.5	L-Vp-NBp-CHs-INp-Blp-CHp-NBs-L
North West long	20	8	L-Vp-NBp-CHs-DRp-SUTp-CHp-NBs-L
West Inner	21	3.3	L-Vp-CHp-NBs-L
South Inner	22	2.5	L-Ss-NBs-Vs-L
East Inner	23	1.3	L-Ss-Hs-Vs-L
North Inner	24	2.6	L-Vp-NBp-L